

Characteristic Computed Tomography Findings of Intersigmoid Hernia

Shimizu H*, Yamashita T, Imamura T and Kanai M

Emergency and Critical Care Medicine, Tokyo Metropolitan Police Hospital, Tokyo, Japan

*Corresponding author:

Hiroshi Shimizu,
Emergency and Critical Care Medicine, Tokyo
Metropolitan Police Hospital, Tokyo, Japan,
Tel: +81-03-5343-5611,
E-mail: eichi-s@akane.waseda.jp

Received: 01 Jun 2022

Accepted: 09 Jun 2022

Published: 15 Jun 2022

J Short Name: JCMI

Copyright:

©2022 Shimizu H, This is an open access article distributed under the terms of the Creative Commons Attribution License, which permits unrestricted use, distribution, and build upon your work non-commercially.

Citation:

Shimizu H, Characteristic Computed Tomography Findings of Intersigmoid Hernia. J Clin Med Img. 2022; V6(12): 1-2

Keywords:

Computed tomography; Internal hernias;
Intersigmoid hernia

1. Clinical Image

A 52-year-old man with no surgical history was admitted to our hospital. Physical examination revealed tenderness in the lower abdomen. Contrast-enhanced computed tomography (CT) showed a closed-loop formation and edema of the distal ileum between the sigmoid colon and left psoas muscle (Figure A). Edema and a sac-like appearance of the ileum on the dorsal side of the sigmoid colon were also observed (Figures 1B and 2B). We strongly suspec-

ted a sigmoid-mesocolon hernia; therefore, surgery was urgently performed. The ileum was incarcerated in the intersigmoid fossa, with adhesions and released, with no sign of intestinal necrosis (Figure C). Intersigmoid hernias are very rare, accounting for 6% of all internal hernias [1]. Although it is often difficult to diagnose even with CT, and it may be diagnosed by exploratory surgery; this case showed some characteristic CT findings of intersigmoid hernia and was a rare case that could be diagnosed preoperatively [2].

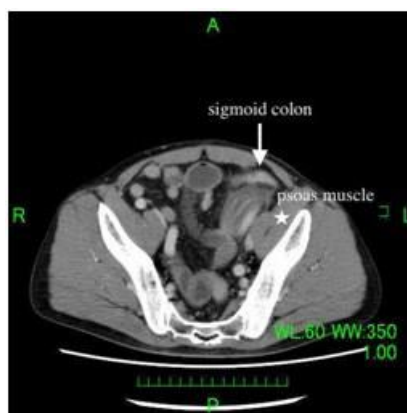


Figure A: A closed-loop formation and edema of the distal ileum between the sigmoid colon and left psoas muscle.

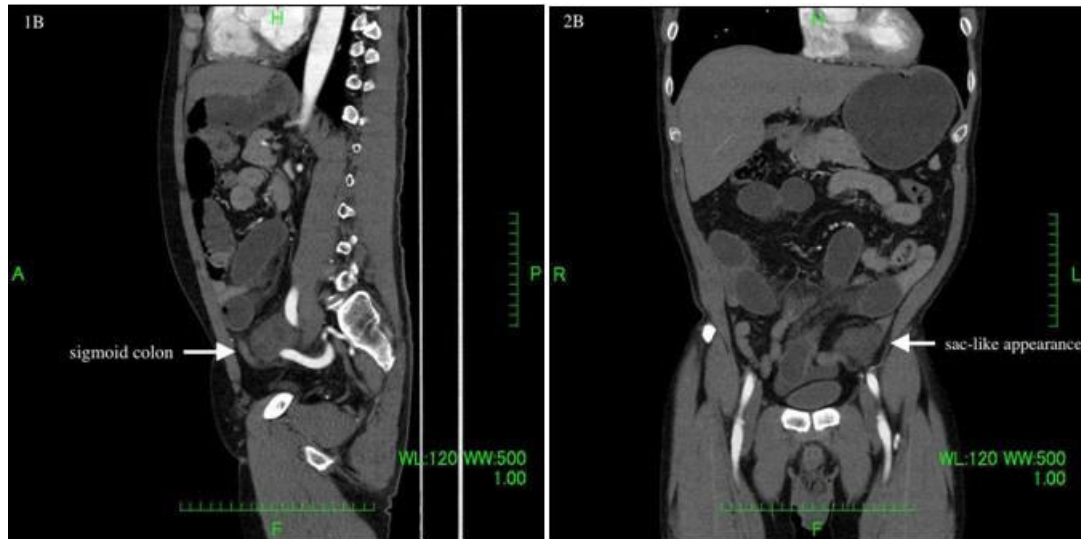


Figure B: Edema and a sac-like appearance of the ileum on the dorsal side of the sigmoid colon were also observed.



Figure C: No sign of intestinal necrosis.

References

1. Martin LC, Merkle EM, Thompson WM. Review of Internal Hernias: Radiographic and Clinical Findings. *AJR Am J Roentgenol.* 2006; 186(3): 703-717.
2. Lanzetta MM, Masserelli A, Addeo G. Internal hernias: a difficult diagnostic challenge. Review of CT signs and clinical findings. *Acta Biomed.* 2019; 90(Suppl 5): 20-37.